



LDA Remote Learning Bulletin

Remote Learning at LDA

Dear Parent/Carer,

The new school year has seen a new way of working - where school is fully open but that, on occasion, pupils may be required to isolate at home. We would like to thank you for your continuing support for our pupils with their education, whether at school or whilst they study at home. We fully understand that 'home-learning' can be a challenge and we appreciate your hard work and dedication.

We have worked hard this term to set up systems and procedures to allow pupils to access the full educational experience, whether they are in school or working from home. This new 'blended learning' package is at the heart of our Remote Learning provision and runs in tandem with the in-school curriculum offer, ensuring that our pupils continue to benefit from a broad, balanced curriculum and a range of educational experiences.

We have tried to ensure all pupils have access to a suitable electronic device at home and ask that, where this is not the case, you contact the school to see what support we can offer in this area, by emailing office@lordderbyacademy.co.uk

Mrs C Phillips
Assistant Headteacher Teaching and Learning/Remote Learning



Our Learning Support Platforms



ClassCharts

Seating plans In class organisation	Behaviour for Progress House points Monitoring/tracking	Homework setting, submission & monitoring
---	---	---

In school learning and homework

ClassCharts is used to manage learning in the classroom, for example awarding house-points, seating plans, behaviour tracking and homework setting.

Pupils and parents should already be accessing ClassCharts. Please contact the school for support if you have not yet logged on.

Google Classroom is our key learning platform for pupils working remotely and all lessons and classroom resources can be accessed by logging in to this online area. **When pupils are unable to attend school, Google Classroom must be used to access their curriculum.** Google Classroom log ins have been shared with pupils and should be recorded in their planner; please contact school if you need any additional classroom codes.

Remote Learning



Google Classroom

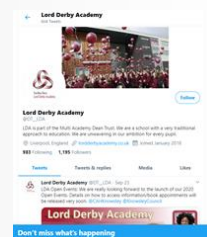
Subject
classes by
class or
year group

Learning resources
Assessment materials
Revision and wider study

Subject lessons
Interactive learning
Linked resources

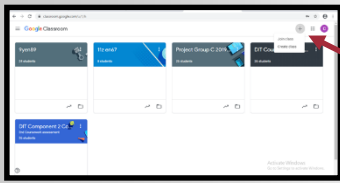


Keep up to date with school news and information via the website www.lordderbyacademy.co.uk and LDA Twitter **Lord Derby Academy** @DT__LDA



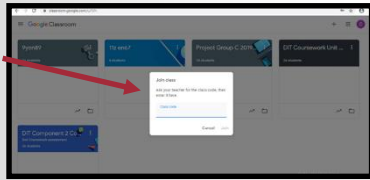
Getting started

1. Go to **classroom.google.com**
2. Pupils should log into google classroom using pupil school log-in (ending @thedeatrustmoodle.org) and password



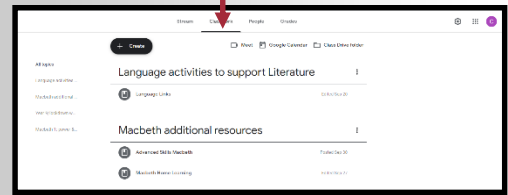
3. To enrol in a new classroom press the '+' icon and click 'join class'

4. Add the class code to enrol

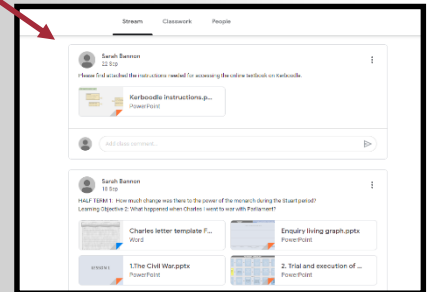


Using Google Classroom

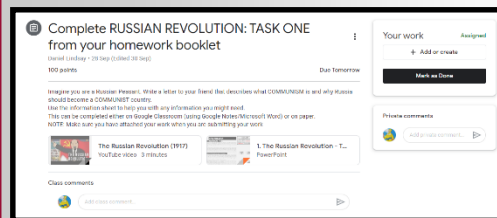
lessons, assignments and resources are posted in 'classwork' and organised by week or unit



'stream' shows you all activities, resources and assignments in chronological order



Access assignments, upload work and take part in classroom discussion



Ask questions about the work set

Our Remote Learning Pledges:

- Appropriate work will be set for all classes using the Google Classroom platform
- Google Classrooms, work set and pupil work and comments will be carefully monitored by Heads of Year, Heads of Department and Senior Leaders
- Where appropriate, we will continue to share paper based learning and support with resources



Getting the Best from Remote Learning

Key Information for parents and carers:

- Pupils working remotely should follow their normal timetable, accessing lessons and resources in subject classrooms
- A quiet area at home (away from distractions) with a desk or table to work at, provides an effective learning environment
- Pupils should submit work daily. Any work submitted will receive feedback from teaching staff where and when appropriate
- Where pupils leave a comment or message for a member of staff (for example, to ask for help with a task set) staff will aim to respond within 3 working days
- Where possible, additional 'live' lessons will be provided by subject areas for pupils working from home

Pupils are reminded to:

- Log in using @thedeatrustmoodle.org
- Turn off camera and leave it turned off throughout any live lessons
- Turn off microphone and leave off for the duration of any live lessons, unless directly requested, for example to respond to a question
- Only use language/communication suitable for a classroom environment at all times during the live lesson and while accessing the Google Classroom. Senior leaders will monitor work-rate and communication
- Commit to the learning, including completing any tasks set, to the best of their ability
- Ensure they stay up to date and on task in all curriculum subjects
- Ensure they use any additional learning platforms such as Bedrock, Mathswatch etc to support their learning